

# Wexford Co Council - Ports , Harbours and Marinas

---

Capt Phil Murphy, Senior Marine Officer, Wexford County Council

23<sup>rd</sup> Nov 2022



# Who am I ?

- Class one Master Mariner
- 17 years at Sea
- Coastal and deep sea ships
- Joined Wexford County Council 2006
- Originally based in Kilmore Quay
- Now in the Harbour Office Wexford



# Bulk carriers – trading worldwide



# V/ULCC's – Middle / Far East /Europe



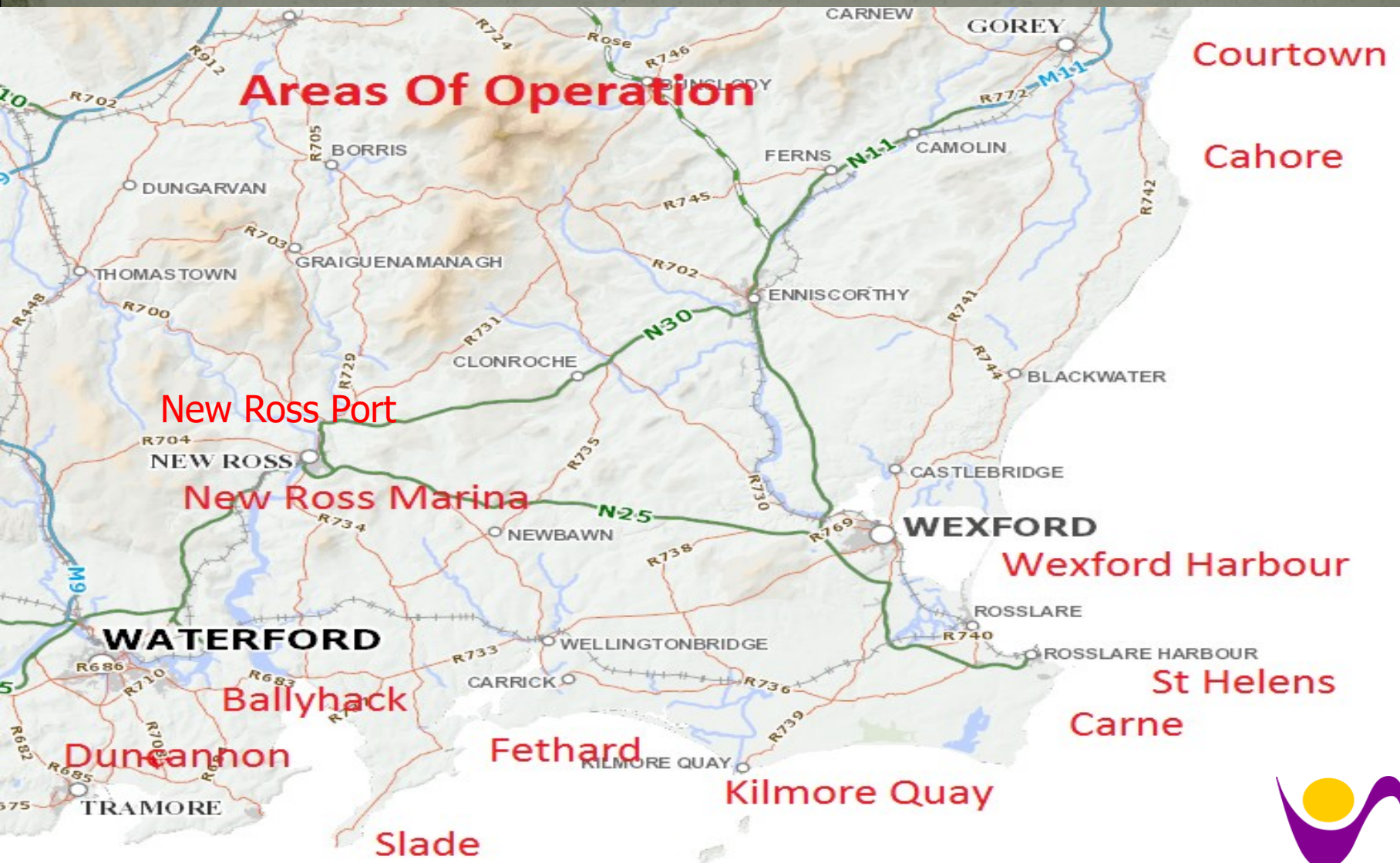
# Bell Lines Waterford – Containers



# Stena Line - Ferries



# WCC Ports, Harbours and Marinas



# Blue Flag Marinas

New Ross Marina



Trinity Wharf  
Development

Kilmore Quay Marina



# COASTAL SECTION SUMMARY

## COASTLINE

- COASTLINE FROM KILMICHAEL POINT ON WEXFORD/WICKLOW BORDER TO BALLYHACK
- TOTAL LENGTH 250 KM APPROX

## PIERS & HARBOURS

- 11 PIERS AND HARBOURS IN TOTAL
- FROM COURTOWN IN THE NORTH TO NEW ROSS MARINA IN THE SOUTH WEST.
- New Ross Port Aug 2019

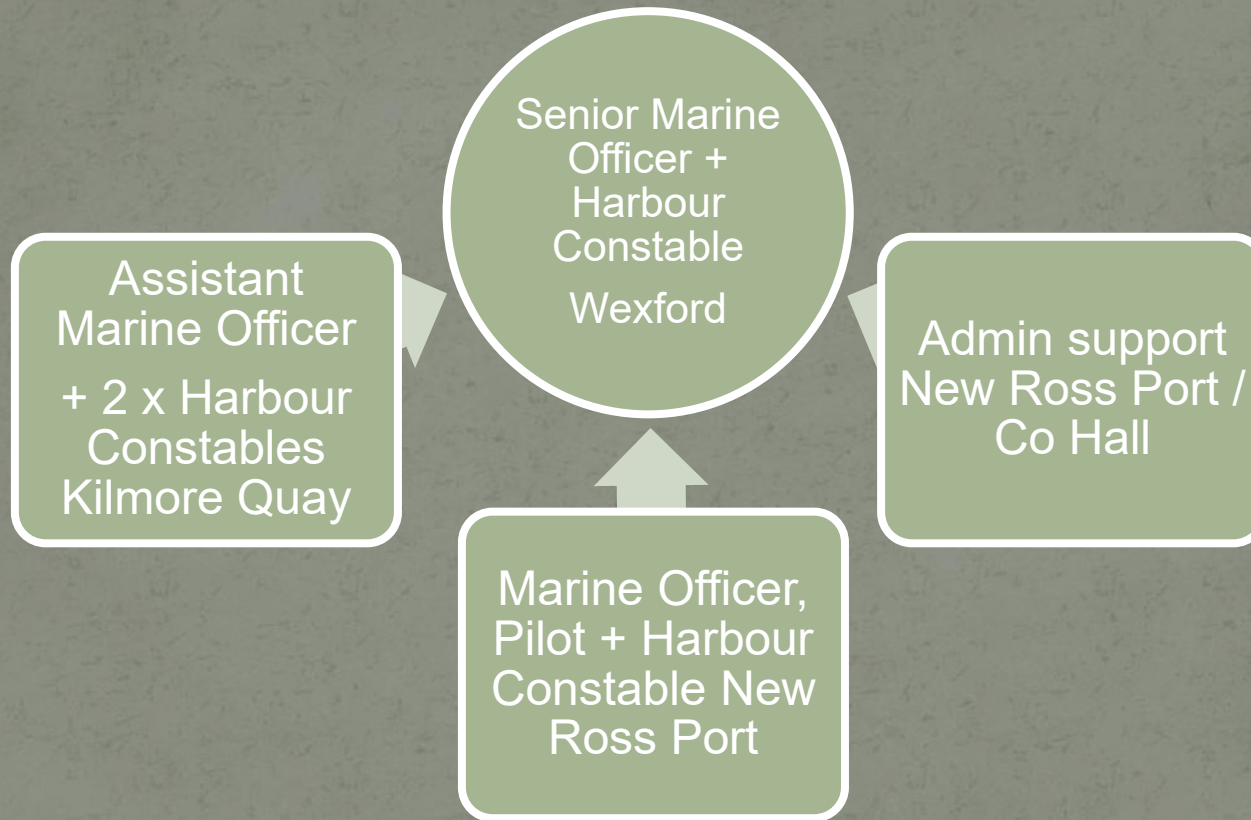


# PIERS & HARBOURS ACTIVITIES

- Capital works at Ports, Harbours and Marina's. – BALAMI Scheme
- Emergency works.
- Routine maintenance works
- Operations of harbours, ports and marinas
- Oil Pollution Response



# Staffing Structure



N.B. One of only three Counties with Marine Officer type structure, and personnel from seagoing / marine backgrounds



# Navigation App

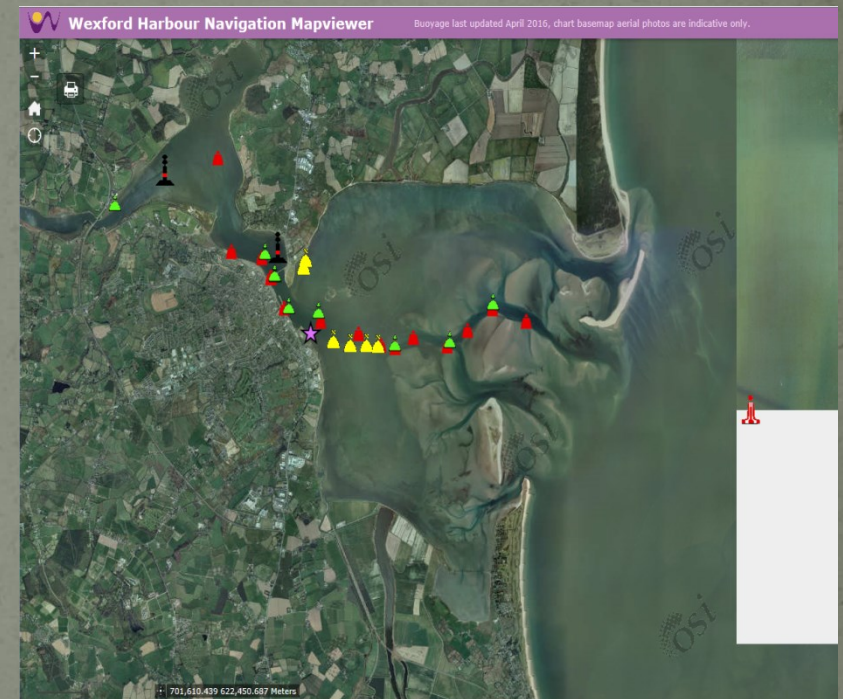
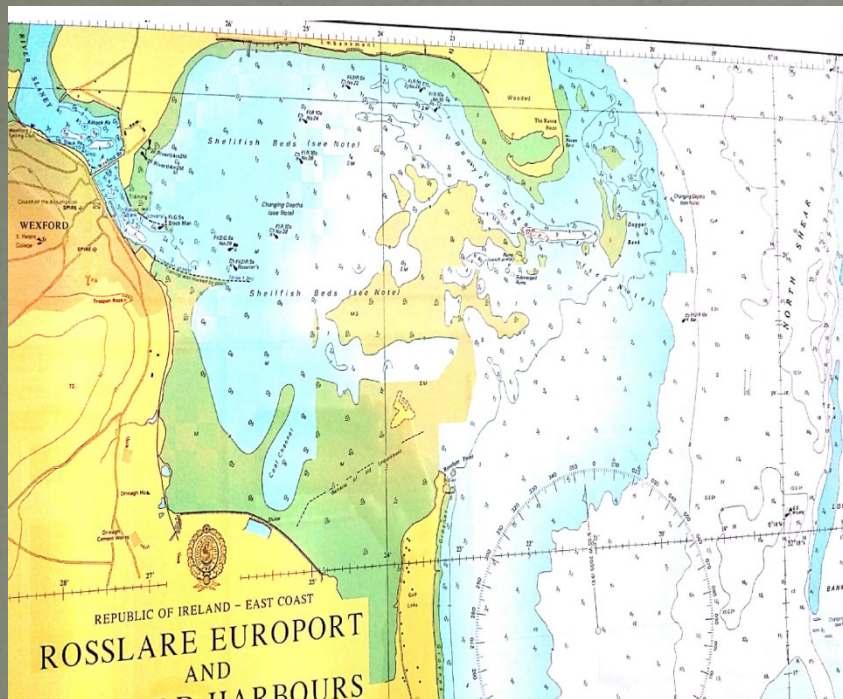
- Wexford Harbour Shifting Sands
- Traditional Charts of little or no value
- Seasonal buoyage
- Issues with up to date information
- Navigation App helps to overcome these problems
- Increase in visitor numbers since its introduction
- One of a suite of WCC Apps available



# Wexford Harbour Charting Problems

- Based on Channel Surveys from 1952!

Vs the reality!



# User Display



Wexford Harbour Navigation Mapviewer

Buoyage last updated January 2019, chart base-map aerial photos are indicative only.



# Pilot Boat James Stevens



- <https://wexford.canto.global/b/MOCOQ>

# Challenges / Opportunities

- Brexit – effect on fishing industry – decommissioning scheme
- Brexit – effect on marine tourism – exchange rates / travel agreements
- Offshore renewables – effect on fishing grounds / opportunities for alternative employment
- Building the maritime brand in the County

# Thank You

