



ONDINE

From Sky to Seabed



Ondine is an Irish company dedicated to the provision of marine and aerial survey requirements of the ORE Sector.

Our focus is on best-in-class data quality, safety, commercial optimisation, and delivery of environmentally conscious low-impact survey solutions.

A group of survey professionals, with decades of global experience

Turnkey solution to accelerate development



Planning | Consultancy | Geo-Data Acquisition | Processing | Analysis | Reporting

Service Offering

- Geophysical Surveys - Hydrographic / UXO / Ultra-High Resolution Seismic - nearshore and offshore capabilities
- Aerial Surveys – DAS, Terrestrial, Mapping
- Environmental Surveys – Benthic
- Geotechnical Surveys
- Data Processing and Reporting including GIS and mapping services

Integrated Management System compliant to standards
ISO - 9001 / 14001 / 45001



Kommandor Iona

24hr operations, 30+ day endurance

Assets mobilised with brand new in 2022 state of the art equipment and sensors – Ondine owned and managed

Remain fully mobilised 24/7

Ondine working in Irish market 2022 with opportunities in North Sea, Europe, US in 2023

Expanding in both assets and resource to meet market demands



BEST – IN – CLASS DATA

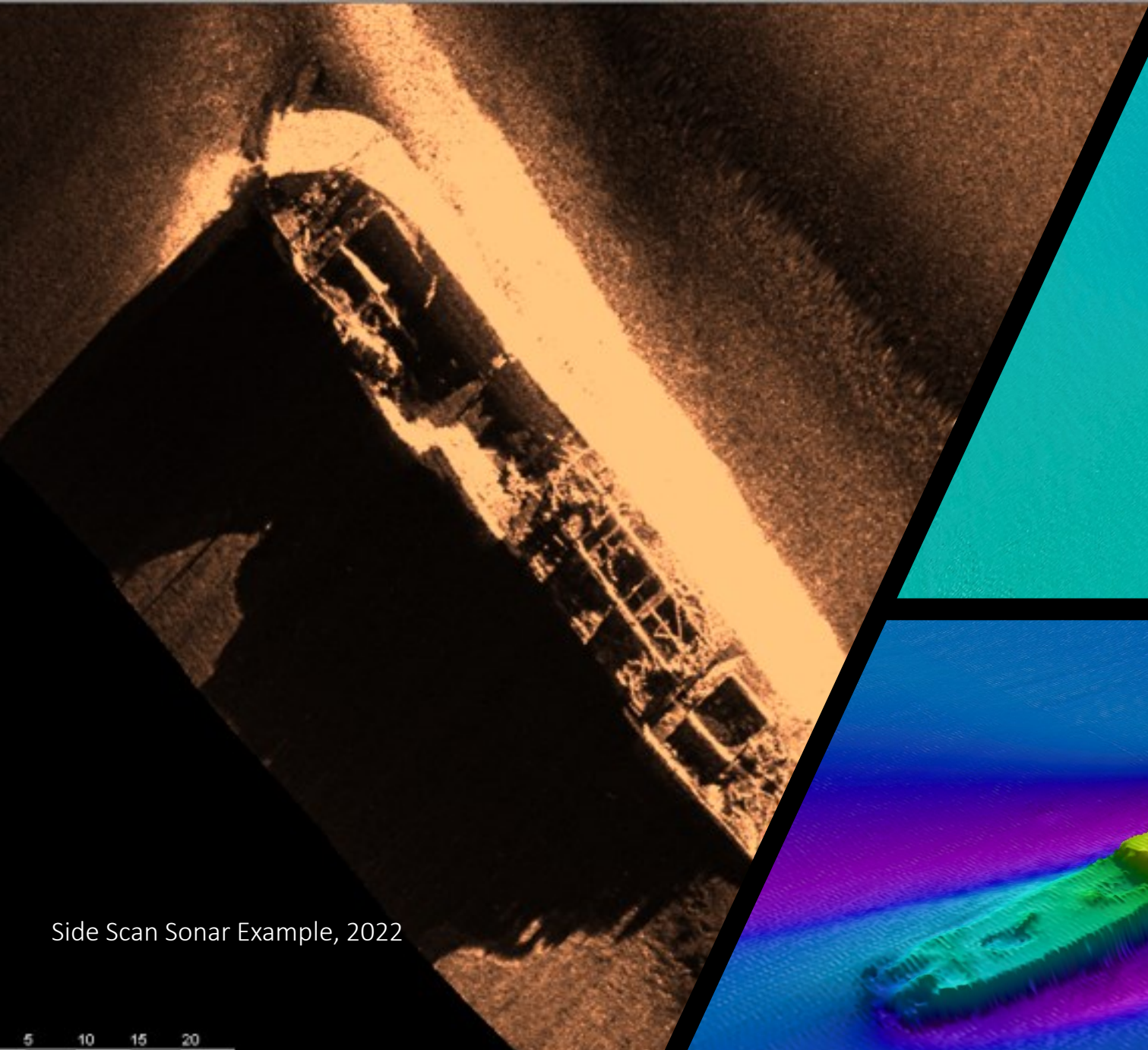
OnDine prides itself on being recognised as not only an acquisition company but a data company also

Tier 3 Data Centre located in City West, Dublin

Hybrid cloud-based solution

Utilising very latest technologies in Data Management, Processing and Deliver

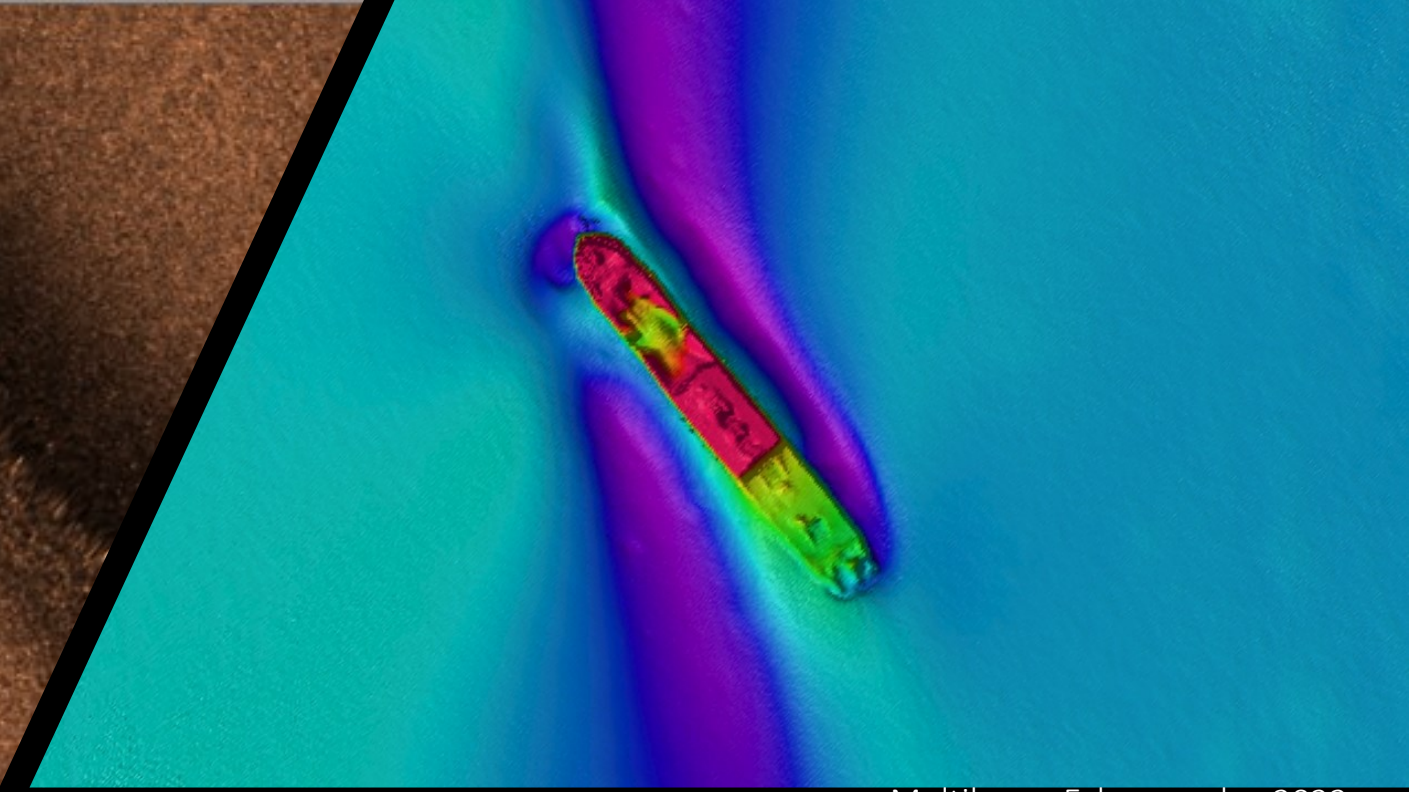
Infrastructure and planning in place to future proof and expand as appropriate



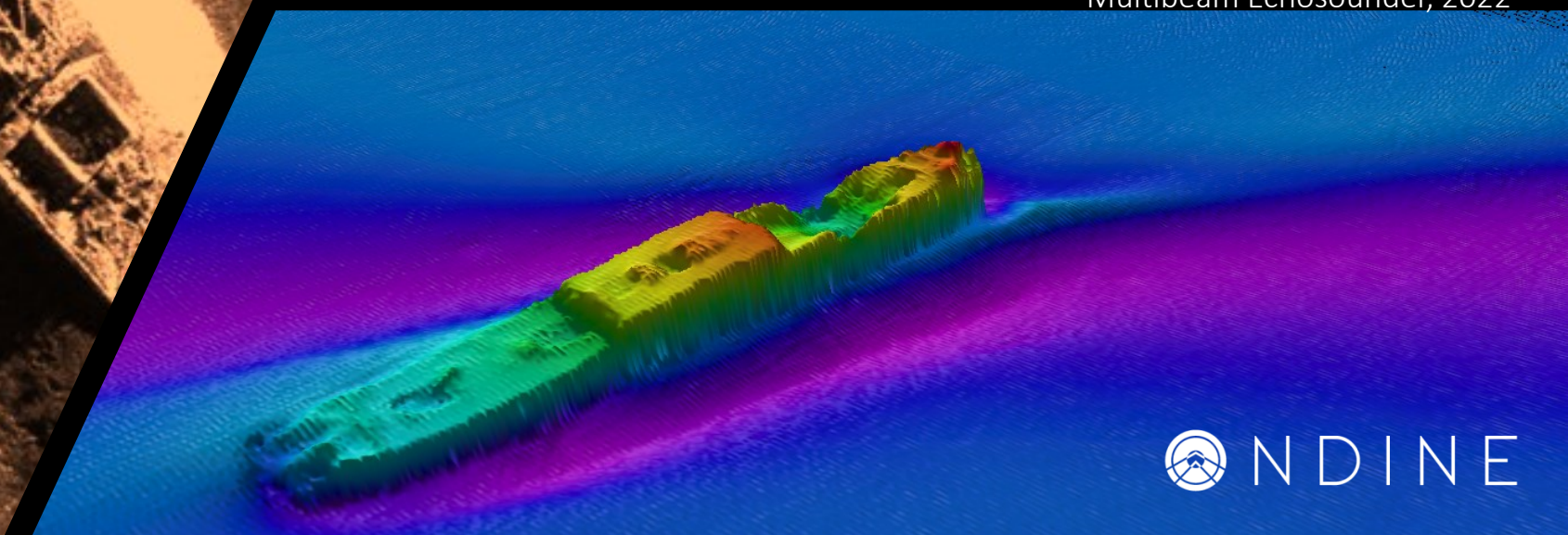
Side Scan Sonar Example, 2022

5 10 15 20

Sub-bottom profiler, 2022



Multibeam Echosounder, 2022



THANK YOU!

Let's stay in touch:



info@ondine-survey.com



ondine-survey.com